

**SPECIFICATIONS**

MODEL NO.	CAPACITY COLD RIVET				STANDARD JAW						MOVING JAW			NET WEIGHT WITH FOOT CONTROL	
	Alum.		Steel		A Reach		B Gap		C Closed Height		Maximum Travel		Max. Force With 90 P.S.I.		
	in.	mm	in.	mm	in.	mm	in.	mm	in.	mm	in.	mm		pounds	lbs.
6000A - 1-1/2"	3/16	4.8	5/32	4.0	1-1/2	38	1-5/8	41	7/8	23	5/8	16	6500	27	12.2
6000A - 2-1/4"	5/32	4.0	1/8	3.2	2-1/4	57	2-1/8	54	1	25	1	25	5000	27	12.2
6000A - 3"	1/8	3.2	3/32	2.4	3	76	2-5/16	58	1	25	1-1/8	25	4000	28	12.7
6000A - 3-1/2"	1/8	3.2	3/32	2.4	3-1/2	89	3-5/16	84	1	25	1-5/16	33	3500	28	12.7

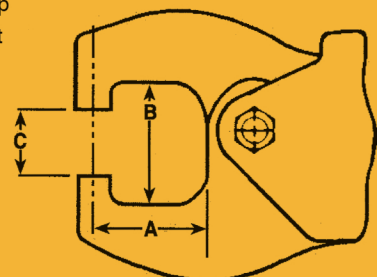
Shipping Weight = 32 LBS  
Shipping Dimensions = 21"x16"x10"

**PARTS NUMBERS**

ITEM	PART NO.	DESCRIPTION	QUAN.
1	190.001	WASHER, THRUST, MAIN BEARING	2
2	040.007	ROLLER, MAIN BEARING, INNER	1
3	040.004	NEEDLE, ROLLER	35
4	120.020	MAIN BEARING, COMPONENTS	1
5	*	(SEE JAWS PARTS LIST)	
6	*	(SEE JAWS PARTS LIST)	
7	080.003	GUARD, ROLLER	1
8	160.003	SCREW, ROLLER GUARD	1
9	120.019	END ROLLER, COMPLETE	1
9A	040.005	END ROLLER, OUTER	1
9B	040.004	NEEDLE, ROLLER	29
9C	040.006	END ROLLER, INNER	1
10	220.009	END ROLLER, SHAFT	1
11	190.012	WASHER, THRUST .750 X .010	4
12	120.005	ASS'Y WEDGE ROLLER, HEAVY DUTY	2
12A	040.021	ROLLER, OUTER .750 X .470	2
12B	040.020	NEEDLE, ROLLER .0625 X .450	2 X 20
12C	220.002	SHAFT, ROLLER	1
13	120.024	ASS'Y WEDGE ROLLER COMPLETE	1
14	141.001	COUPLER, QUICK DISCONNECT 1/4"	1
15	180.002	NUT, BEARING SHAFT	1
16	190.002	WASHER, BEARING BOLT	1
17	050.039	BOLT, BEARING SHAFT	1
18	220.006	SHAFT, BEARING REAR	1
19	230.001	C-RING, BEARING SHAFT REAR	2
20	200.005	SPRING, LEAF	1
21	220.007	PIN, LEAF SPRING	1
22	007.000	HOUSING, CYLINDER, BARE	1
23	200.001	SPRING, INNER "PISTON RETURN"	2
24	200.002	SPRING, OUTER "PISTON RETURN"	2
25	050.040	WEDGE	1
26	220.005	PIN, FORK	1
27	050.006	FORK, WEDGE	1
28	120.001	ASS'Y, PISTON	1
29	140.000	LEATHER, PISTON CUP	2
30	190.000	PLATE, PISTON LEATHER, BACKUP	2
31	050.027	SHAFT, PISTON	1
32	230.000	RING, SNAP	2
33	150.003	'O' RING, SPACER INNER	1
34	050.013	SPACER, CYLINDER	1
35	150.004	'O' RING, SPACER OUTER	1
36	050.038	PISTON, REAR	1
37	180.001	NUT, 3/8" X 24, SELF-LOCKING	1
38	100.000	GASKET, CYLINDER HEAD	1
39	150.011	'O' RING, STAT CYL HEAD	1
40	030.003	CYLINDER HEAD	1
41	160.005	SCREW, A.H.C.S. 10-24 X 3/4"	6
42	051.002	ALUM. RT ANGLE MOUNT	1

**ALLIGATOR NOMENCLATURE**

- A Reach
- B Total Yoke Gap
- C Closed Height



**PARTS NUMBERS**

ITEM	PART NO.	DESCRIPTION	QUAN.
43	051.000	MOUNTING BASE	1
44	051.001	MAST, MOUNTING BASE	1
45	160.016	AHCS 3/8 - 16 X 3/4"	1
46	160.011	AHCS 3/8 - 16 X 1 1/4"	2
47	050.045	SHAFT, CYLINDER HEAD ADJUSTMENT	1
48	180.005	NUT, 5/16"-18 HEX	1
49	220.010	PIN, ROLL 3/32" X 1"	1
50	050.046	KNOB, STROKE ADJUSTMENT	1
51	100.001	RUBBER RIBBED BASE	1
52	055.007	FOOT CONTROL BASE	1
53	055.006	FOOT CONTROL HOOD COVER	1
54	180.003	NUT, HEX LOCK 10-32	2
55	190.014	WASHER, PLAIN X 7/32"	2
56	141.050	VALVE, 3-WAY	1
57	100.010	HOSE, BLUE 7'	1
58	141.036	HOSE, CLAMP	2
59	160.012	SCREW, AH BUTTON 1/4 - 20 X 3/8"	4
60	FC-3	3 WAY FOOT CONTROL COMPLETE	1
61	141.005	FITTING, AIR INLET	1
62	141.033	FITTING, BRASS 1/4" NPT M TO F RT. ANGLE	1

**JAW PARTS NUMBERS**

ITEM	PART NO.	DESCRIPTION	A		QUAN.
			REACH	HOLE	
5	275.001	JAW, MOVING	1-1/2"	3/16"	1
6	285.001	JAW, STATIONARY	1-1/2"	3/16"	1
5	275.002	JAW, MOVING	1-1/2"	1/4"	1
6	285.002	JAW, STATIONARY	1-1/2"	1/4"	1
5	275.003	JAW, MOVING	2-1/4"	3/16"	1
6	285.003	JAW, STATIONARY	2-1/4"	3/16"	1
5	275.004	JAW, MOVING	2-1/4"	1/4"	1
6	285.004	JAW, STATIONARY	2-1/4"	1/4"	1
5	275.005	JAW, MOVING	3"	3/16"	1
6	285.005	JAW, STATIONARY	3"	3/16"	1
5	275.006	JAW, MOVING	3"	1/4"	1
6	285.006	JAW, STATIONARY	3"	1/4"	1
5	275.007	JAW, MOVING	3-1/2"	3/16"	1
6	285.007	JAW, STATIONARY	3-1/2"	3/16"	1
5	275.008	JAW, MOVING	3-1/2"	1/4"	1
6	285.008	JAW, STATIONARY	3-1/2"	1/4"	1

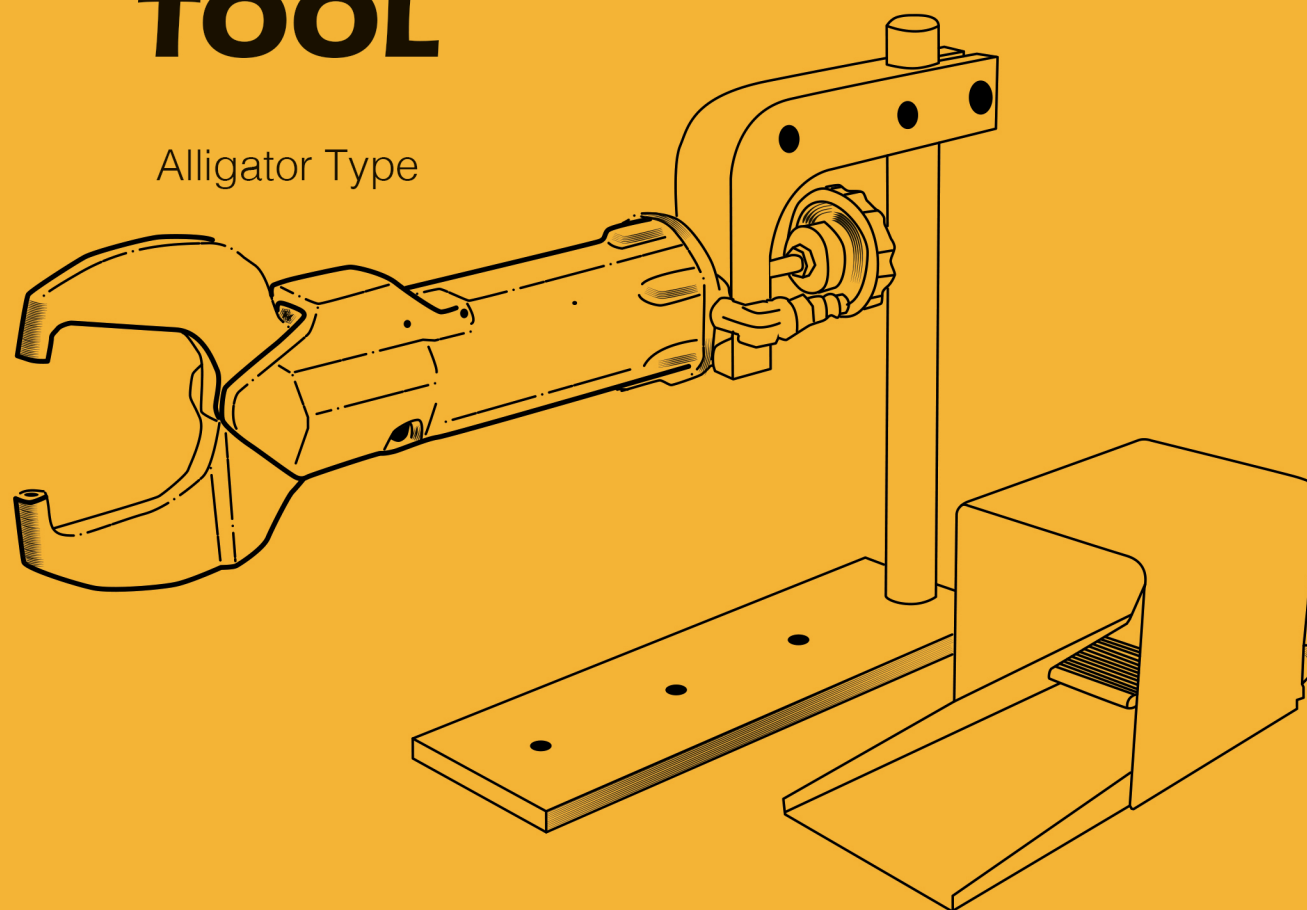
# GP TOOLS

HANDCRAFTED AMERICAN RIVETERS



## Model 6000 AS COMPRESSION TOOL

Alligator Type



## BENCH MOUNTED

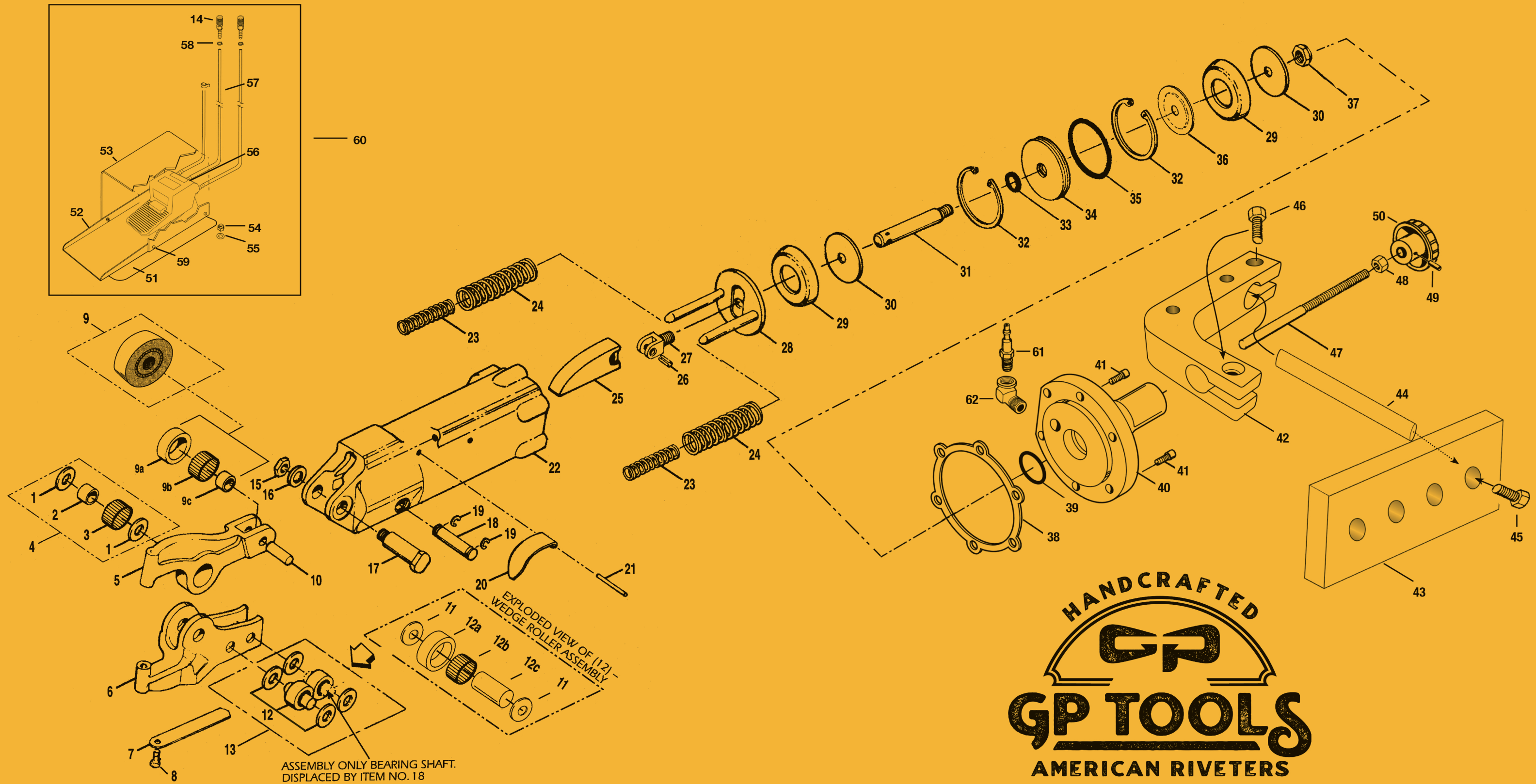
**MANUFACTURING FACILITY**  
1900 Heyrend Way,  
Idaho Falls, ID, 83402  
208-773-8080

**E-MAIL**  
info@gptools.com

**WEBSITE**  
www.gptools.com

# MODEL 6000 AS COMPRESSION TOOL

This model operates on standard line air pressure (90-100 psi) (6.12-6.8 Bar) and is conveniently operated by hand or can be bench mounted with foot control (optional) thereby freeing both hands. Interchangeable jaws are available. See jaws parts list (on back)



HANDCRAFTED  
**GP**  
**GP TOOLS**  
 AMERICAN RIVETERS